

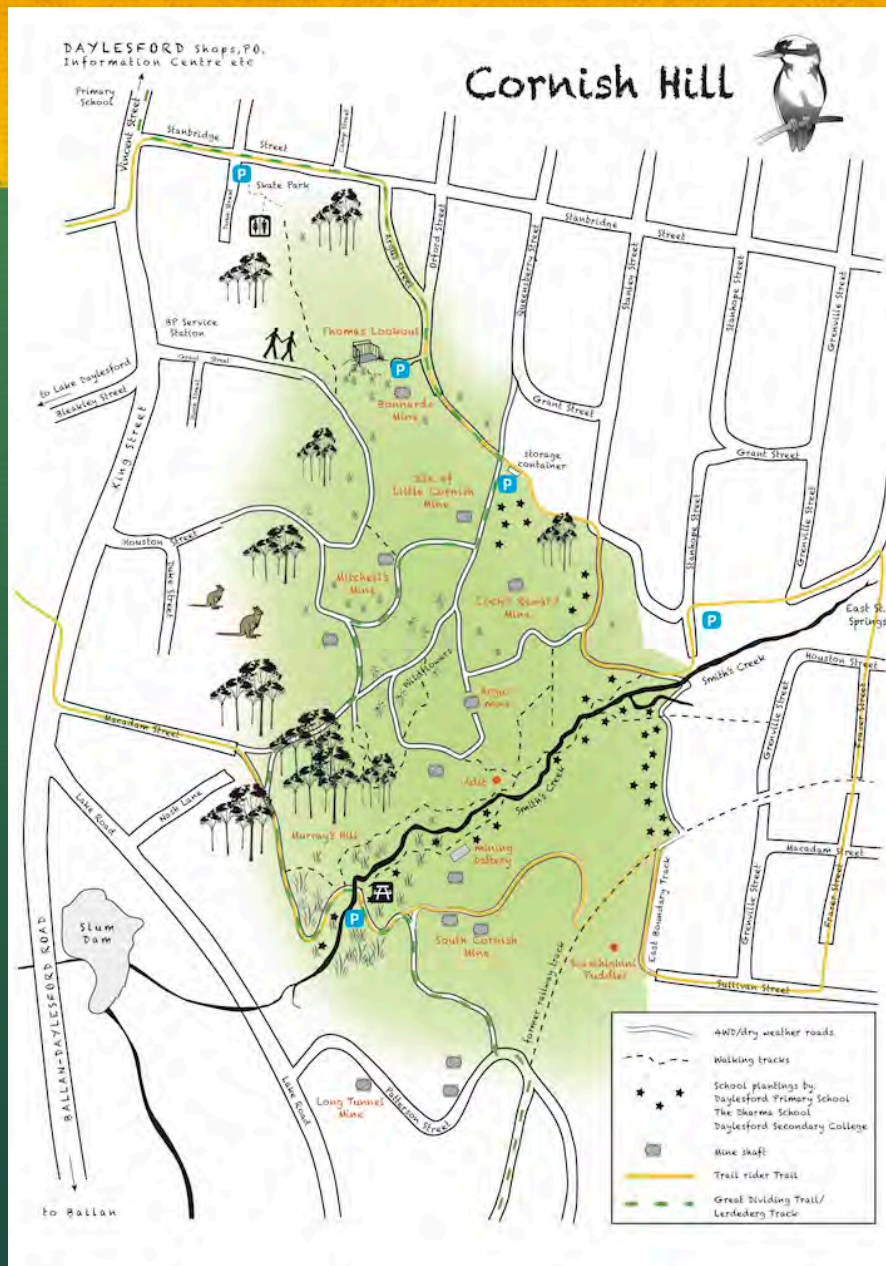
The background of the slide features a stylized landscape. The upper portion is a dark green field filled with overlapping, semi-transparent mountain peaks of varying heights. A horizontal band of bright yellow, textured ground separates the green mountains from a solid dark green base at the bottom. The text is centered within the yellow band.

Friends of Cornish Hill AGM 2015

In the Beginning



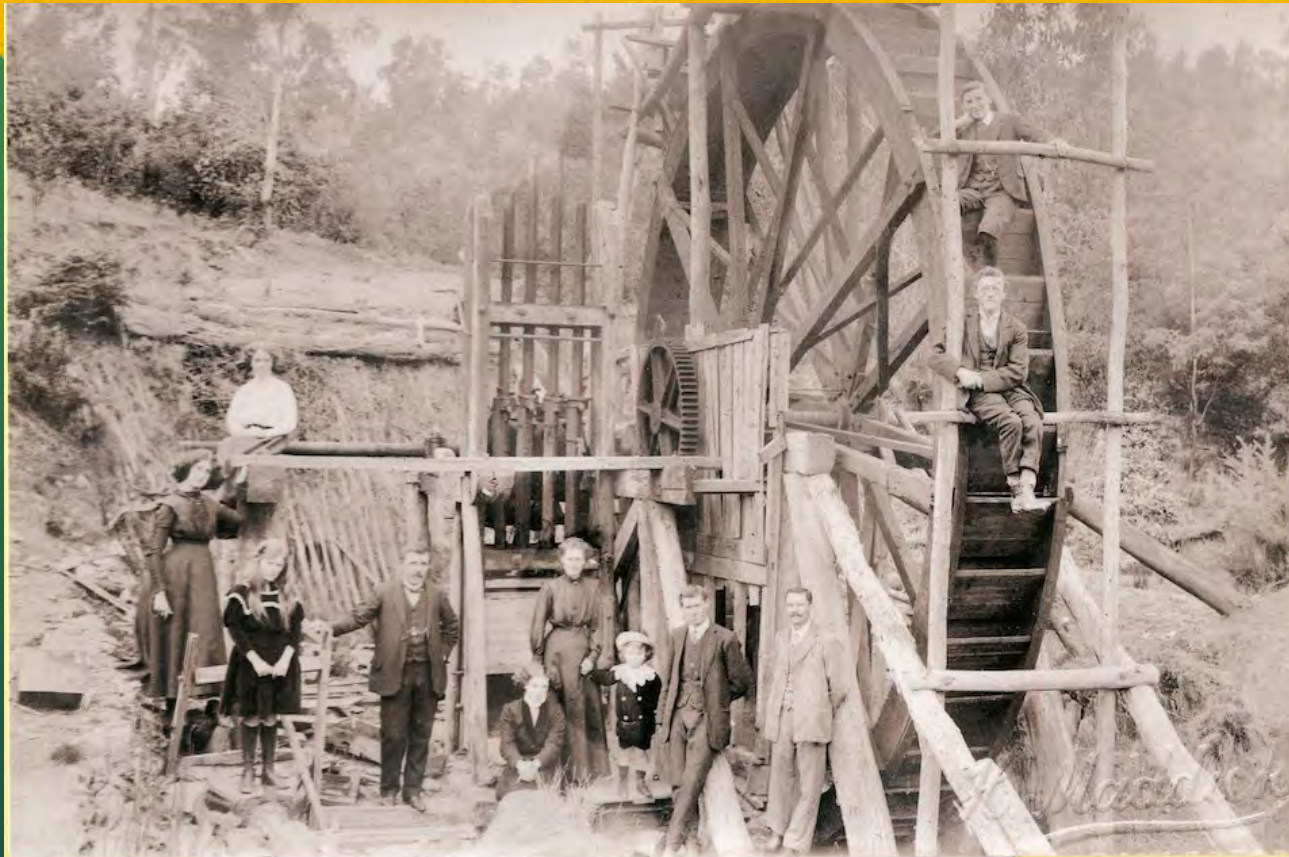
Map



The Miners



Smiths Creek Battery



WATER POWERED 4 STAMP BATTERY
C1911 SMITH'S CREEK (below James's house)

WATER RACES RAN FOR 110s OF MILES AROUND THE GOLDFIELDS

Number 1 Shaft North Cornish Mine c. 1900



Argus Hill 1st Cornish Battery



Mitchells



Mitchells Remains



Mitchells



Bonnards & Lookout



Remnant footings of Bonnards



The Lookout



View of Lake from Lookout



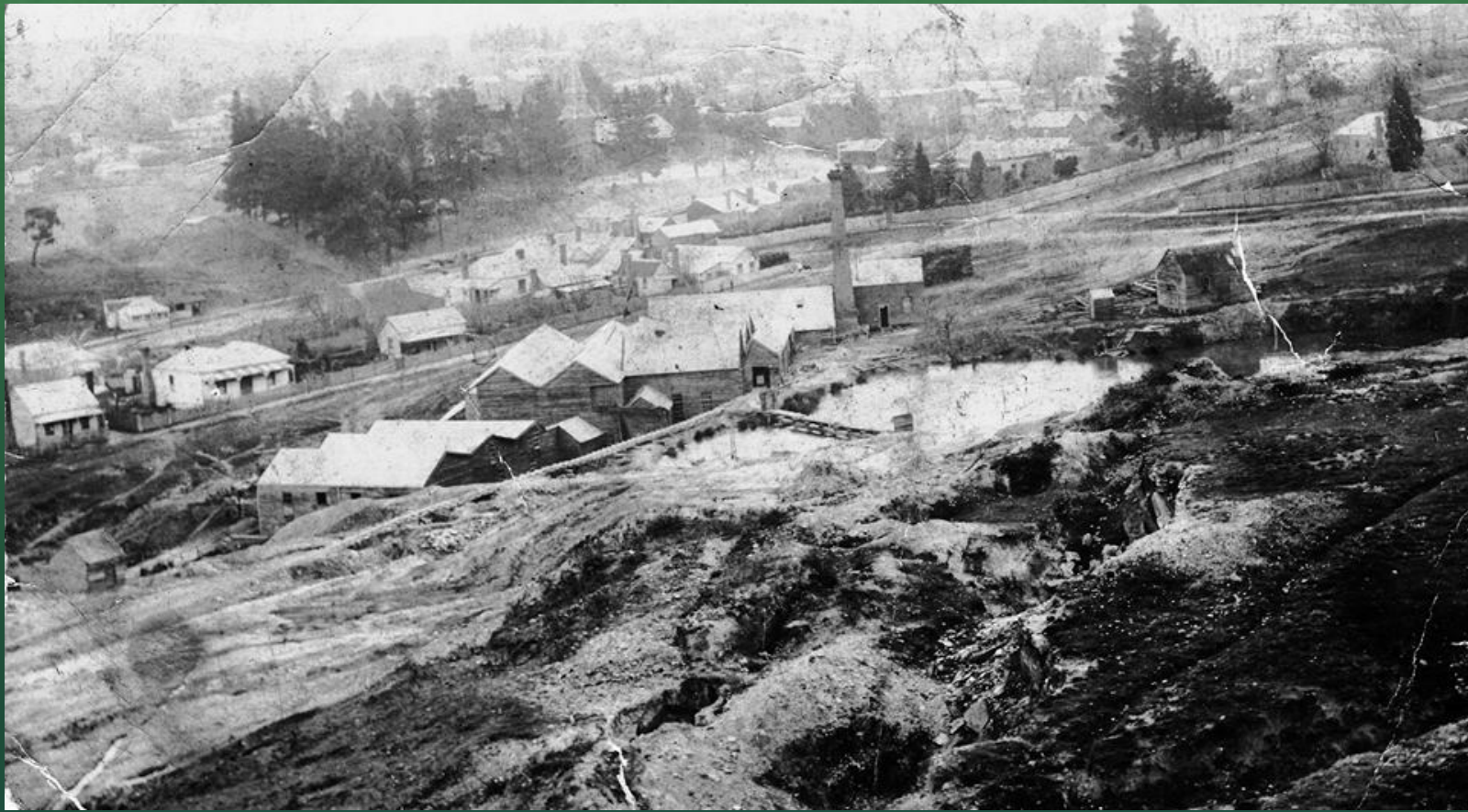
Lake View to Wombat Hill



Freemans Battery



Pool and Battery



Pool



DAYLESFORD FROM THE OLD CORNISH MINE

REAL PHOTO SERIES M. 2711.

Water Race



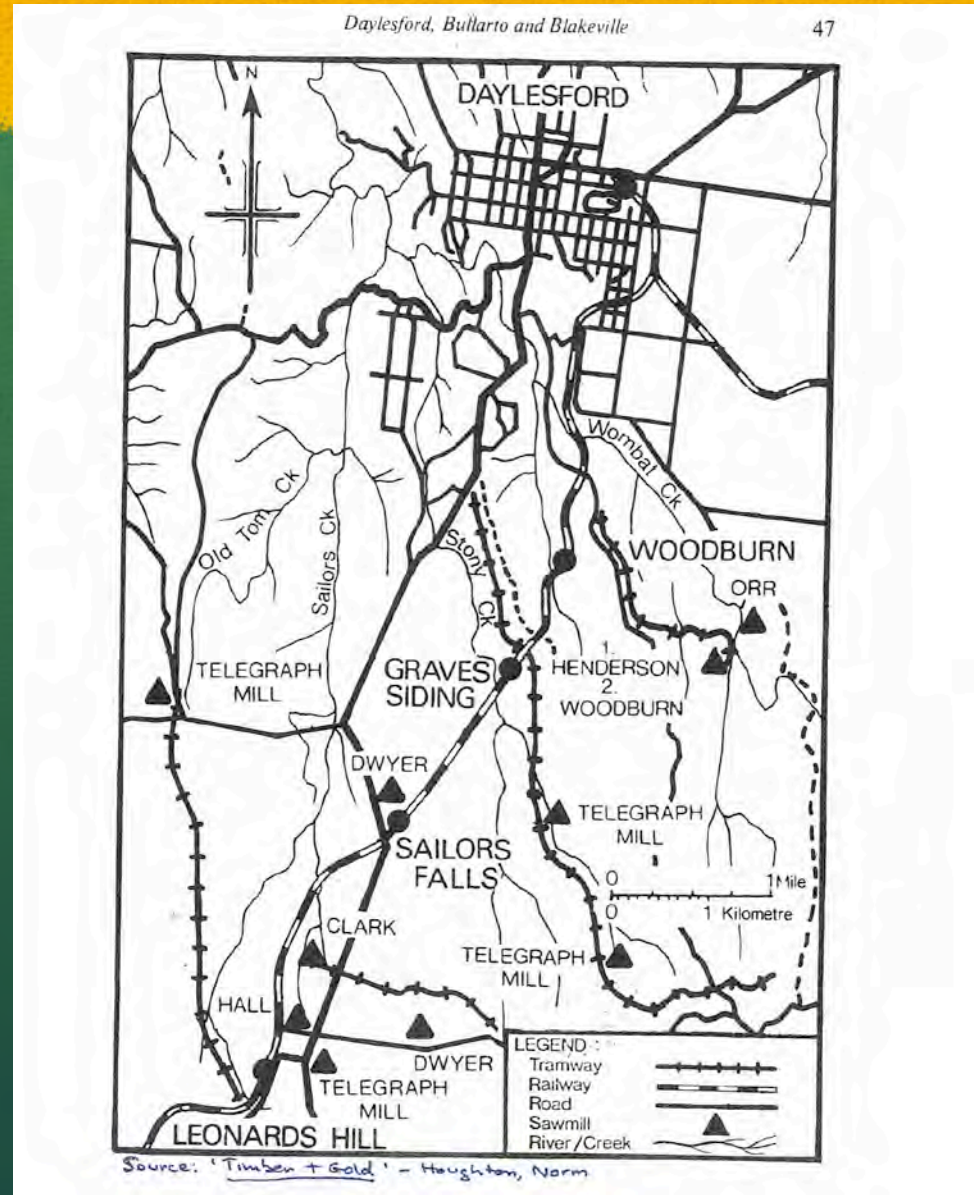
Ballarat Train on Jubilee Lake Bridge in 1920s



Jubilee Lake Train Line (taken from East St)



Railway Stations



Subdivision



Train Line Outline as Seen Today



Grenville St



The Old Railway Line



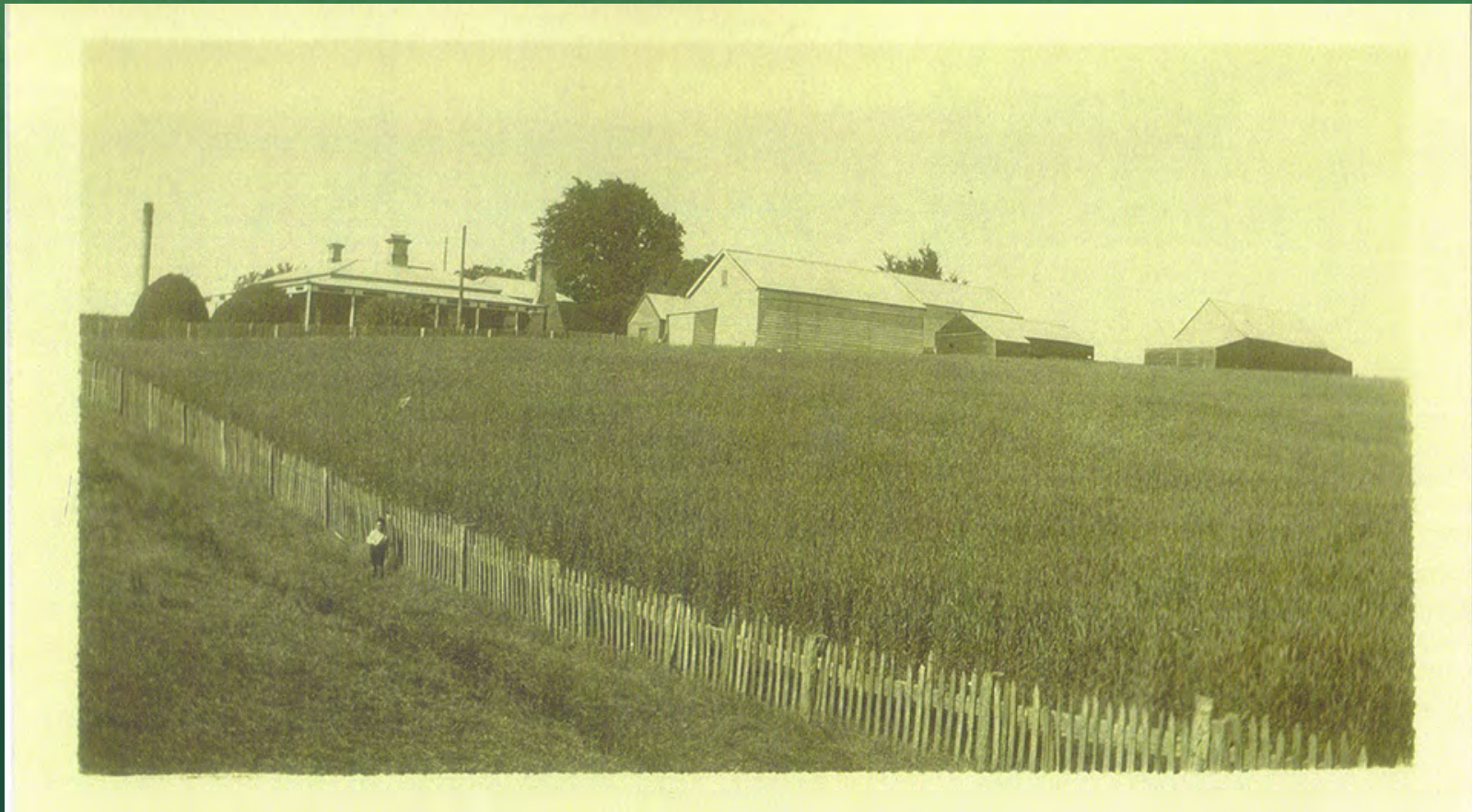
Smith's House 1899



Smith's House Today



Mayfield 1936



Smiths Creek Beginning



The Front Gate



Looking Towards the Hatchery



What Remains of the Hatchery



Egg Hatchery



The Fingerling Pool



Is This George or Monty?



SHIRE OF DAYLESFORD AND GLENLYON

Notice To



Residents

In The Vicinity Of Argus / Cornish Hill

Dear Householder

Re: PUBLIC



MEETING

December 8th, 1994, at 8:00 p.m..

Council has called a Public Meeting for Thursday, December 8th, 1994, at the Town Hall, Vincent Street, Daylesford, for the purpose of pursuing the options for the future use of the area known as Argus / Cornish Hill.

Some concern has been expressed by a local interest group that plans are in place to sell off the area for residential development.

Council has had negotiations with the Dept. of Finance on the future use of the area, and has called this Public Meeting to fully ascertain the view of the broader community as to the appropriate use of this significant area. The Dept. of Finance has requested that Council and the community develop broad parameters within which development options might be considered, the Public Meeting is the first step in developing this community position.

I therefore invite you to attend the meeting on December 8th, to ensure that your views as a "neighbouring" resident of Argus / Cornish Hill are taken into account.

K. J. TORI

Acting Chief Executive Officer

22 November 1994

18-10-1995
ADVOCATE

Cornish Hill now has some friends

A number of volunteers and friends of the Cornish-Argus Hill area formed the group "Friends of Cornish Hill" at a meeting at Daylesford Historical Museum last month.

The Friends of Cornish Hill is a non-political group aimed at retaining the area as public land and developing it for the enjoyment of residents and visitors.

Cornish Hill area is an old gold mining precinct

south of Stanbridge St. and east of Duke St., Daylesford.

Cornish Hill provides the easterly "backdrop" to Lake Daylesford and includes a native bush area with links to Lake Jubilee.

The area has become a recreational area for walkers and residents, who enjoy the outlook and report having seen echidnas, wallabies, koalas, varied species of birds and native flora.

The Friends of Cornish Hill has prepared a submission for heritage list-

ing on the Victorian Register of Historically Significant Areas.

Members are confident the application will be successful.

Activities of the group include working bees, guided walks of historic areas, tree planting and weed eradication.

The group's will meet at the Daylesford Historical Museum at 7.30 p.m. on Friday, October 20, and the third Friday of each month.

New members are welcome.

Preparing for School Planting DPS 2010?



Same Area 2015



View from across the creek



Another View



Picnic Area 2011



Propagated Ferns Along the Creek



Picnic Area Today

